

# MONTHLY MEMBERSHIP PROGRESS REPORT

District 201V5

Results as of: 6/30/2020

GMT:

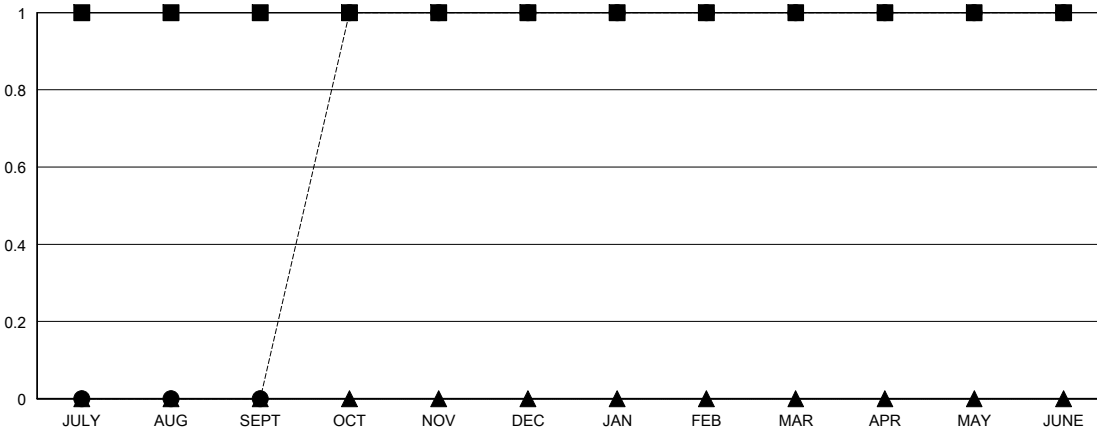
LOCATION AUSTRALIA

GMT CA

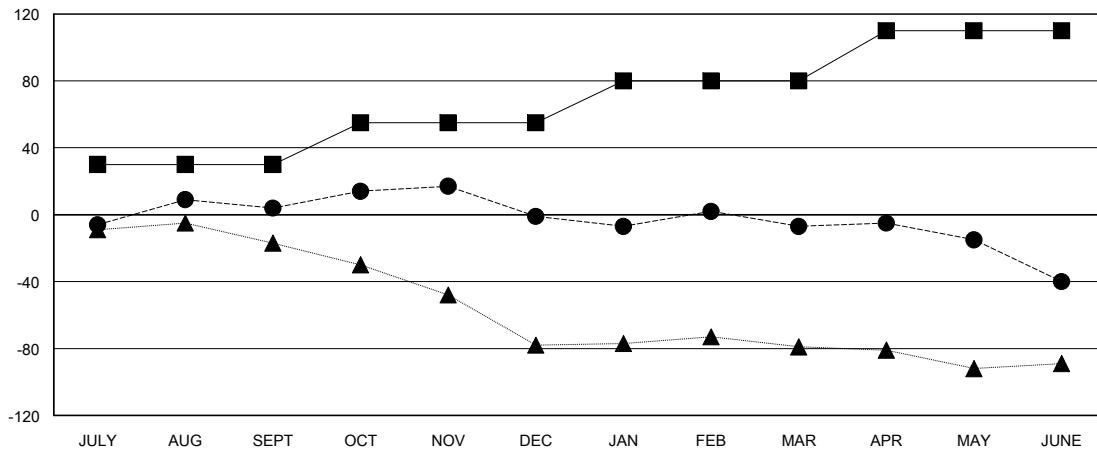
Clubs			
RESULTS FOR 2019-2020			
QUARTER	NEW CLUB GOAL	NEW CLUBS	DROPPED CLUBS
JULY/AUG/SEPT	1	0	0
OCT/NOV/DEC	0	1	0
JAN/FEB/MAR	0	0	1
APR/MAY/JUNE	0	0	0

Members			
RESULTS FOR 2019-2020			
QUARTER	MEMBER GROWTH NET GOAL	MEMBER GROWTH ACTUAL	DROPPED MEMBERS ACTUAL (including transfers)
JULY/AUG/SEPT	30	36	29
OCT/NOV/DEC	25	66	66
JAN/FEB/MAR	25	32	33
APR/MAY/JUNE	30	45	59

GOALS AND ACTUAL NEW CLUBS CUMULATIVE



GOALS AND ACTUAL MEMBERS CUMULATIVE



DROPPED CLUBS: 1	
<b>DROPPED MEMBERS</b>	
DECEASED	23
CLUB CANCELLED	0
OTHER	164
<b>TOTAL</b>	<b>187</b>

41 CLUBS OF 66 ADDED 1 OR MORE NEW MEMBERS

GENDER DISTRIBUTION	
MALE	805 (65.18%)
FEMALE	430 (34.82%)

[CLICK HERE FOR CUMULATIVE MEMBERSHIP DATA](#)

TOTAL FAMILY UNIT MEMBERS	149
FAMILY MEMBERS PAYING HALF DUES	77